

FDE ORTHO

MODULAR
ENGINEERED
CARBON SPRING
SYSTEM



INFORMATION

Rev.20240905.1

For additional information, instructions and guides scan the code >>



800.FABTECH | FABTECHSYSTEMS.COM | 3304 HILL AVE. EVERETT, WA. 98201





A MODULAR SYSTEM

PDE™ (Posterior Dynamic Element) Orthopedic is a modular engineered carbon spring system for composite AFO brace designs. This simple, align-able system provides the ability to tune functional energy performance to changing patient conditions. Dynamically adjust external, internal, plantar & dorsiflexion alignments as well as easily change spring stiffness. Designed for everyday use in situations where pain and offloading of weight may be key factors.



A PERFECT SOLUTION FOR

- Complex fractures of the foot or lower limb
- Limb salvage
- Failed fusion
- Nerve/muscle impairment or loss below the knee
- Dorsiflexion and/or plantarflexion deficit or loss
- Soft tissue injury or loss
- High body weight CVA
- MS (Multiple Sclerosis)
- Osteo Arthritis
- Charcot Marie tooth disease
- Partial foot amputations
- Chopart amputation



FEATURES AND BENEFITS



Modular, Reusable Design

Change and test different springs to accommodate changes in the patient over time



Clinically Proven

The PDE™ spring system has been delivered to a large patient population world-wide with proven results



Adjustable Alignment

The shim kits (tapered wedges), allow for fine-tuning plantar/dorsi flexion as well as internal/external rotation of the foot during fitting and delivery of the brace.



9 Flex (stiffness) Spring Categories

Makes it easy to find the right option for your patient



Low Profile

Slim & unobtrusive design fits easily under clothing and into shoes



Reliable

Consistently delivering top performance and durability over time



Made in the USA

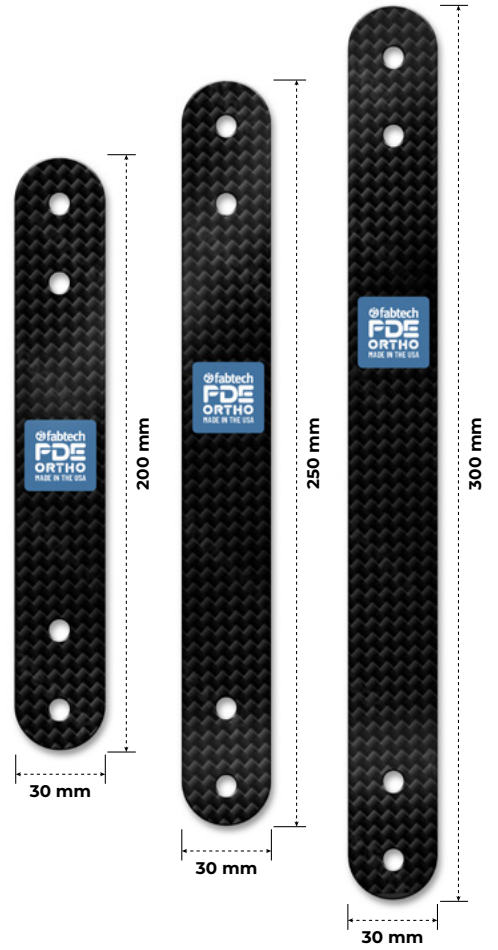
PDE™ parts are manufactured, tested, and assembled in the USA

PDE™ ORTHOPEDIC TECHNOLOGY ALLOWS PATIENTS TO

- Walk with greater fluency and stability
- Participate in higher intensity activities such as running
- Swap the PDE™ spring stiffness and rebound to alter walking mechanics depending on the activity
- Adjust the ankle alignment of the device depending on the shoe heel-height
- Change the ankle alignment of the device depending on the intended activity

SPECS

- Length: 200mm/250mm/300mm
- Width: 30mm
- Material: Intermediate-modulus high tensile strength T800S fiber
- 9 Stiffness Categories:



ADJUSTABLE ALIGNMENT

The PDE™ modular system allows for fine-tuning the alignment (during patient fitting, delivery, and follow-up) to improve the function, performance and comfort of the AFO brace.

PDE™ Alignment Shim Set

Part number: **PAS3**

Alignment shims can be effortlessly inserted between the PDE™ spring and the brace to adjust the plantar/dorsi flexion and rotational alignment (in 2.5° increments) of both the upper-cuff & footplate individually.

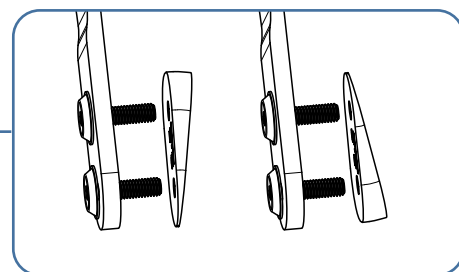
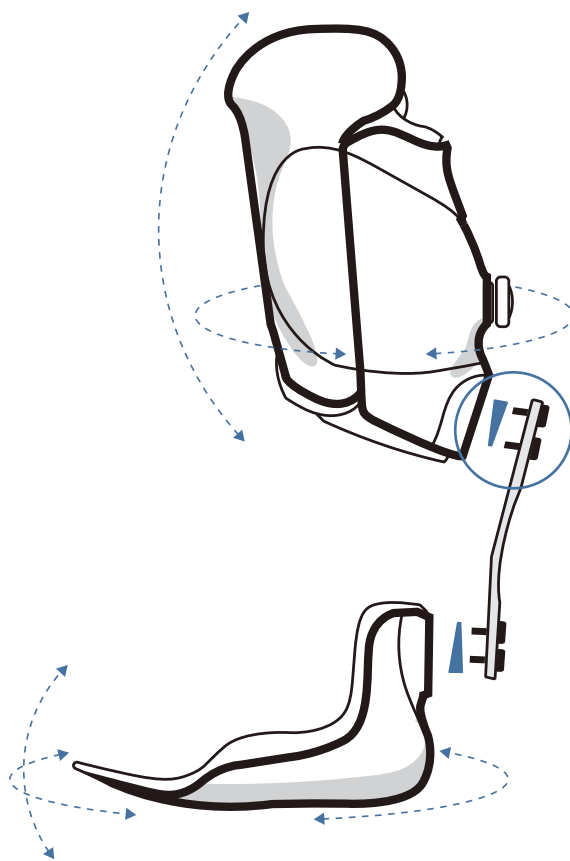
Shims can be changed and adjusted at any time during the life of the brace, making it easy to adapt to patient changes.



Symmetrical shape accommodates flexion and extension as needed

ADJUSTABLE PLANTAR/DORSI FLEXION & ROTATIONAL ALIGNMENT

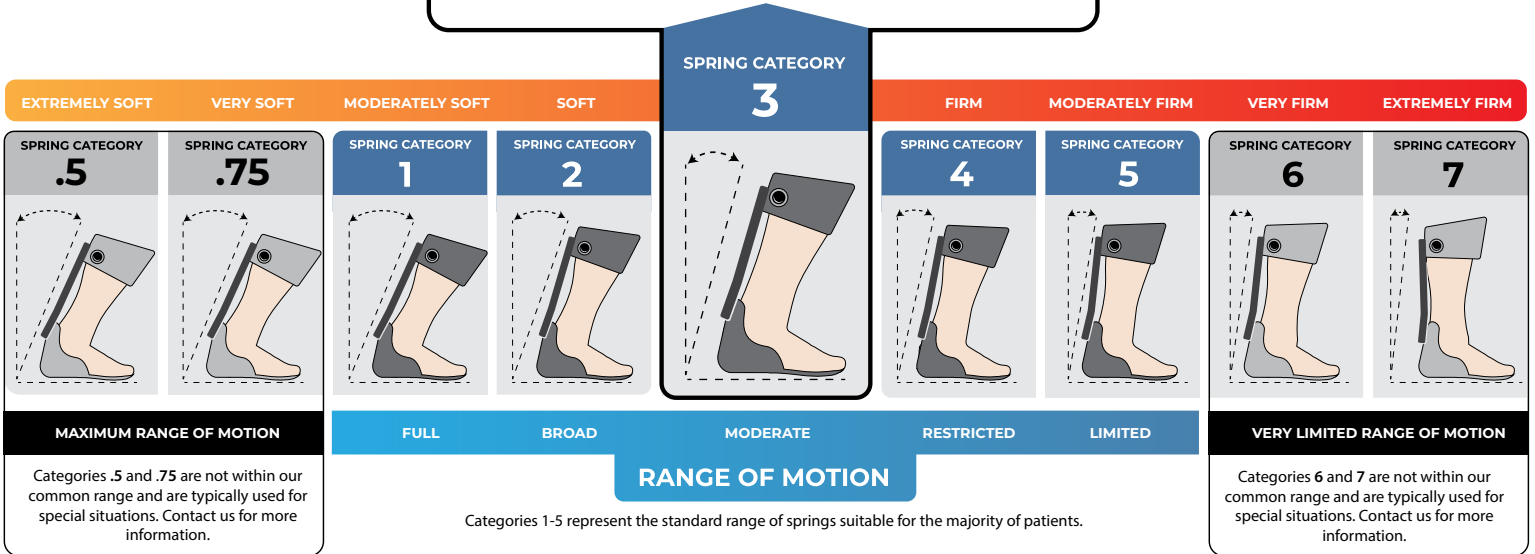
Shims are placed between the PDE™ spring and the brace anchor point. Shim positioning determines alignment angle.



CHOOSING SPRING CATEGORY (FIRMNESS)

Most Common Starting Point

Category number **3** spring is a good starting point. From here the AFO can be tuned firmer or softer based on the patient needs. The simple four-bolt system makes changing the spring quick and easy.



Each patient has unique needs, so there are no specific weight limits or ranges to guide spring selection. Instead, choose the engineered spring category that best enhances the patient's gait and overall functionality.

NOTE

A **PDE™ Diagnostic Fitting Kit** is the best way to evaluate and fit a patient for the appropriate spring category

SWAP IT OUT & LOCK IT DOWN

Make quick and secure spring changes with our Re-Aktiv Torque Wrench

Re-Aktiv Torque Wrench

Part number: **Reaktiv-Wrench**

The Re-Aktiv Wrench is a pre-set torque wrench that takes the guess work out of establishing a safe and functional connection after adjustments.



DIAGNOSTIC FITTING KITS

When building a custom device, it's always nice to have options. That's why we created the PDE™ Fitting Kit diagnostic tool.



PDE™ Orthopedic Fitting Kit

The Fitting Kit is an in-house diagnostic tool which includes the most common range of spring categories (1-5) and assembly components to build the initial brace. It also allows for fine-tuning adjustments during patient fitting & delivery.

Part Numbers:

200mm: FK200

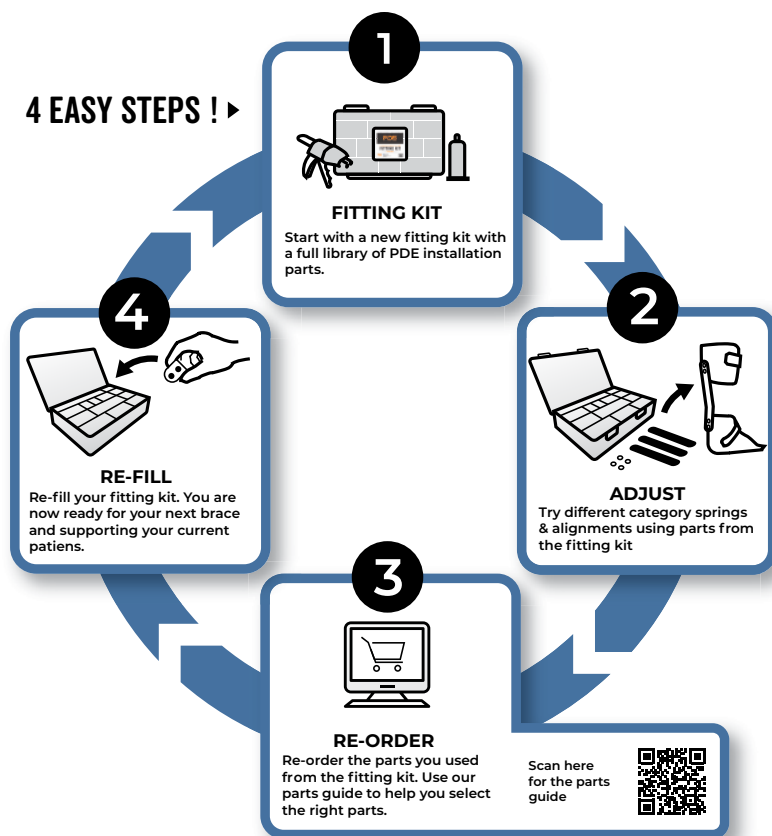
250mm: FK250

300mm: FK300



LEARN MORE

4 EASY STEPS ! ▶



USING THE FITTING KIT

Replace the the parts that get used so you always have a full set of springs & hardware to fit your next patient.

INDIVIDUAL SPRING PART NUMBERS

Check our website for details, instructions, and additional information



200mm
PDE Spring (Individual) 200mm

Size	Category	Part Number	Description
200mm	.5	PS.50-2	PDE Orthopedic Spring 200mm-Category .50
	.75	PS.75-2	PDE Orthopedic Spring 200mm-Category .75
	1	PS1-2	PDE Orthopedic Spring 200mm-Category 1
	2	PS2-2	PDE Orthopedic Spring 200mm-Category 2
	3	PS3-2	PDE Orthopedic Spring 200mm-Category 3
	4	PS4-2	PDE Orthopedic Spring 200mm-Category 4
	5	PS5-2	PDE Orthopedic Spring 200mm-Category 5
	6	PS6-2	PDE Orthopedic Spring 200mm-Category 6
	7	PS7-2	PDE Orthopedic Spring 200mm-Category 7



250mm
PDE Spring (Individual) 250mm

Size	Category	Part Number	Description
250mm	.5	PS.50-250	PDE Orthopedic Spring 250mm - Category .5
	.75	PS.75-250	PDE Orthopedic Spring 250mm - Category .75
	1	PS1-250	PDE Orthopedic Spring 250mm - Category 1
	2	PS2-250	PDE Orthopedic Spring 250mm - Category 2
	3	PS3-250	PDE Orthopedic Spring 250mm - Category 3
	4	PS4-250	PDE Orthopedic Spring 250mm - Category 4
	5	PS5-250	PDE Orthopedic Spring 250mm - Category 5
	6	PS6-250	PDE Orthopedic Spring 250mm - Category 6
	7	PS7-250	PDE Orthopedic Spring 250mm - Category 7



300mm
PDE Spring (Individual) 300mm

Size	Category	Part Number	Description
300mm	1	PS1-3	PDE Orthopedic Spring 300mm - Category 1
	2	PS2-3	PDE Orthopedic Spring 300mm - Category 2
	3	PS3-3	PDE Orthopedic Spring 300mm - Category 3
	4	PS4-3	PDE Orthopedic Spring 300mm - Category 4
	5	PS5-3	PDE Orthopedic Spring 300mm - Category 5
	6	PS6-3	PDE Orthopedic Spring 300mm - Category 6
	7	PS7-3	PDE Orthopedic Spring 300mm - Category 7

ORDER
DIRECT FROM
FABTECH



OR THROUGH ONE OF OUR
DISTRIBUTORS



PARTS & ACCESSORIES

Check our website for details, instructions, and additional information



PAK-1: Anchor Kit For Carbon Braces



PAK2-HD: Anchor Kit Heavy Duty



PTT: PDE Transfer Tool



CT100: Casting Board



PASR: Rotational Alignment Shims Set



PASF: Flexion Alignment Shims Set



PASH: Anchor/Shim Hardware (only)



PAS3: Alignment Shim Set & Hardware



G50: Adhesive Dispenser



60SS: Pluseries™ 60-Second Adhesive



PBOA3: Orthotic RevoFit® Lamination Kit With Slider Lock



Reaktiv-Wrench: Preset Torque Wrench



FK200/FK250/FK300: PDE Orthopedic Fitting Kit
Available in 200mm, 250mm, & 300mm sizes

ORDER
DIRECT FROM
FABTECH



OR THROUGH ONE OF OUR
DISTRIBUTORS



L-CODE EXAMPLES

Category	Code	Description
PTB Style	L1960	AFO Solid Ankle
	L2350	PTB Socket Style AFO Addition
	L2755 (x2)	Light weight material
	L2820	Soft Interface
	L2232	Rocker Bottom AFO Addition
	L2780 (x2)	Bar (anchor) w/ coated, non-corrosive finish
	L2999	Miscellaneous code - Click Medical Revo System
	L2280	Molded Inner Boot
	L2250	Molded Stirrup AFO Addition
Pretibial Style	L1960	AFO Solid Ankle
	L2340	Pretibial Shell AFO Addition
	L2755	Light weight material (x2)
	L2820	Soft Interface
	L2232	Rocker Bottom AFO Addition
	L2780 (x2)	Bar (anchor) w/ coated, non-corrosive finish
	L2999	Miscellaneous code - Click Medical Revo System
	L2280	Molded Inner Boot
	L2250	Molded Stirrup AFO Addition
Partial Foot	L5020	Partial Foot Socket
	L5632	PTB Style Modification
	L5645	Flexible Inner Socket
	L5629	Acrylic Socket Addition
	L5940	Ultra-Light Material Addition
	L5910	Alignable System
	L5783	User adjustable mechanical volume management system <i>*Visit clickmedical.co for additional information</i>
	L5668	Molded Distal Cushion Addition
	L5620	Lower Extremity Test Socket (each)
	L8420	Prosthetic Sock (each)

Please Note: Proper coding is ultimately up to the practitioner and the practice. Please use the information only as a guide to possible code utilization. You must document the patient condition in the patient encounter notes in order to justify some of the associated coding.

POSTERIOR DYNAMIC ELEMENT
FDETM
ORTHOPEDIC

NEED TRAINING & ASSISTANCE?

TECHNICAL RESOURCES

INSTRUCTIONS, TUTORIALS AND ADDITIONAL
INFORMATION



fabtechsystems.com/pde-knowledge-base/

PATIENT RESOURCES

PDE PATIENT GUIDES, INFORMATION,
AND FAQ



<https://fabtechsystems.com/patient-resources/>

CONTACT US
WE'RE HERE TO HELP!



Support



Advice



Service



Information



Solution

CUSTOMERSERVICE@FABTECHSYSTEMS.COM

PHONE: 1.800.FABTECH

 **fabtech**
MAKE MORE POSSIBLE