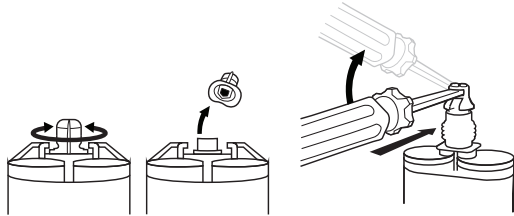


**!** This product is intended for professional use only. Users should reference the most current instructions and documentation, which are available online at [fabtechsystems.com](http://fabtechsystems.com). Always follow applicable guidelines and best practices.

## CARTRIDGE SETUP

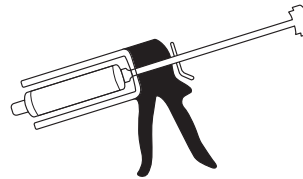
**1** Remove Safety Cap.



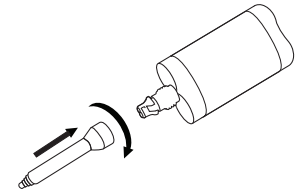
**50ml size:** Twist & pull off the cap.

**215ml size:** Breakaway safety cap using a flat-head screwdriver.

**2** Insert the Cartridge Into the Dispensing Gun.



**3** Attach the Mixing Tip.

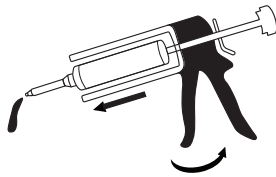


## Surface Preparation

- Ensure bonding surfaces are clean, dry, and free from dust, oils, or waxes.
- For stronger adhesion, roughen smooth surfaces before applying the adhesive.

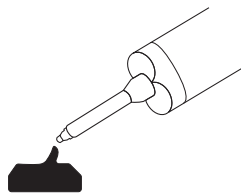
## APPLICATION

**4** Press the Adhesive Through the Mixing Tip.



Discard the first amount of excess adhesive.

**5** Apply Adhesive in a Generous Way.



Join parts within working time and allow to cure (see figure 1).

**6** Store Away with Tip Applied.



Release pressure by depressing the tab.

**!** **NOTE: DO NOT REMOVE TIP AFTER USE.**  
*Tip acts as a sealing cap between uses.*

**7** Prior to Next Use, Remove the Old Tip & Replace with a New Tip.

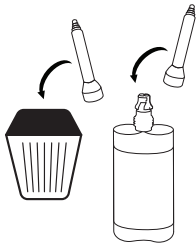


Figure 1

**+Pluseries™ 25**  
Work Time: 25 seconds  
Sand Time: 1.5-3 minutes  
Full Cure Time\*: 10-15 minutes

**+Pluseries™ 60**  
Work Time: 60 seconds  
Sand Time: 5 minutes  
Full Cure Time\*: 10-15 minutes

**+Pluseries™ Composite**  
Work Time: 60 seconds  
Sand Time: 5 minutes  
Full Cure Time\*: 10-15 minutes

**!** **\*SPECIAL INSTRUCTIONS FOR WEIGHT-BEARING APPLICATIONS**

- Minimum Cure Time: 15 minutes before use in load-bearing applications.
- Reinforcement Needed: Always apply fiberglass cast wrap or similar structural support for added durability.

